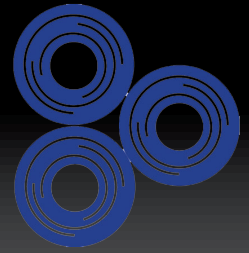




# THIN METAL PARTS

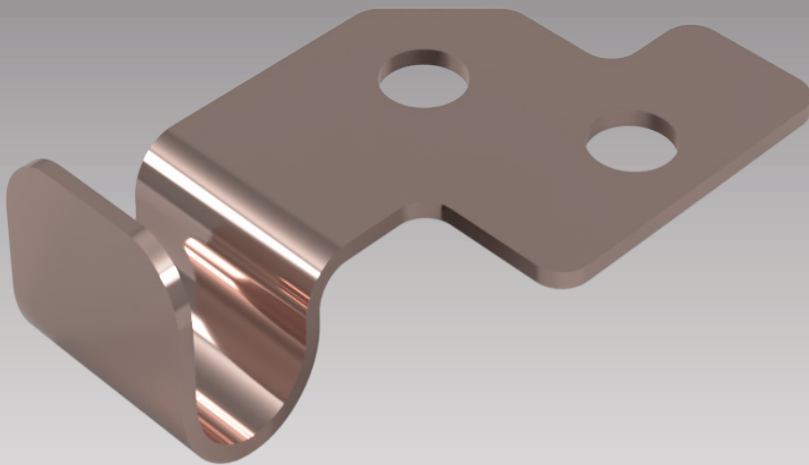


ELECTROFORMING | CHEMICAL ETCHING | LASER CUTTING | PART FORMING  
ISO 9001:2015 CERTIFIED | ITAR REGISTERED



## BATTERY COMPONENTS

Thin Metal Parts specializes in the manufacturing of custom-designed ultra-thin components specific to your application. Using several manufacturing processes proven to produce clean contaminate-free components to suit your battery and electrical component needs, TMP is able to meet the most stringent designs and specifications with our superior quality control and ultra precise manufacturing methods. TMP is equally capable of manufacturing revision-friendly prototype parts and long-term high volume production with precision and consistent results no matter the quantity produced.

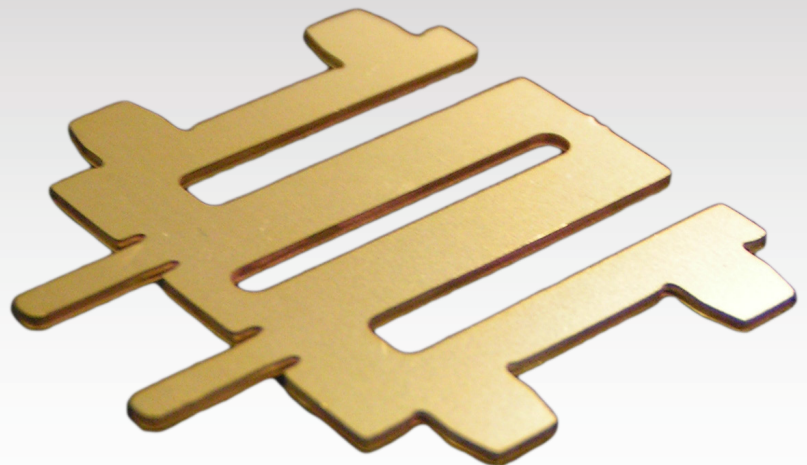


### BATTERY PRODUCTS

- Anodes
- Cathodes
- Insulators/Spacers
- Ultra Fine Mesh
- Deposition Masks
  - Bus Pads
- Battery Contacts
  - Copper Film
- Electrical Connectors
- Custom Battery/Electrical Components

### WHY THIN METAL PARTS?

- Superior Quality Control Using Automated Vision Systems
  - Tolerances down to  $\pm 5 \mu\text{m}$
- 4 Advanced High-Precision Processes
- A Wide Selection Of Metals Including Nickel, Copper, Steel, and Aluminum
- TMP Can Accomodate Nearly Any Size Order From One Piece To Thousands, We Have Your Battery Needs Covered!
- Excellent Customer Service and Support



THIN METAL PARTS

INFO@THINMETALPARTS.COM | 719-268-8300 | WWW.THINMETALPARTS.COM